



[www.ema-tech.com.tr](http://www.ema-tech.com.tr)

## Industrial Coating Systems





Since its establishment, **EMA-Tech** introduced a new outlook toward coating systems, to be your leading partner in this field in Turkey. Insisting on continuous R&D, **EMA-Tech** offers up-to-date and efficient products, which after installation, become as solutions for required applications.

Offering technological solution, **EMA-Tech** also provides customers with consultancy on fields of service, product supply and take in charge active projects. **EMA-Tech** offers professional installation of paintshop facilities as well as after-sales service and spare parts supply. Adjustable projects, service experiences, approach and its quality, **EMA-Tech** provides fast & effective solutions for a wide range of products from a standard paint booth to multi component and complex coating line facilities.

#### **Why EMA-TECH**

##### **High Performance / Optimum Cost**

All EMA-Tech solutions are products which their possession investment and operation cost are at the optimum level. Integrated feature of our solution, combining with current technology eliminates the need for a separate investment in any certain field.

##### **Scalable Solutions**

EMA-Tech products included a wide range of product from a standard paint booth to complex a coating line facilities which are designed according to customer requirements. Scalable structure of products make it possible to extend them without thrown out of the initial investment . As a result a small started operation with smart moves, can be extended without enduring the severe costs.

##### **Flexible and Integratable Solutions**

All EMA-Tech solution are based on optimum operation cost and user freindly utilization. Our flexible structure which is open to integration with different approaches, provides you with efficient evaluations of potentials.

##### **After Sales Support**

Multi-component systems likes coating lines can bring about different needs and expectations after the installation. As a result editing requests in the existing system is unavoidable. Our support policy perspective to problems is not in EMA-Tech privacy, examination of all the point in the work environment and involves the sharing of solutions. The main goal is to ensure the detection of the problem and resolve the problem in optimum way.



*PAINING and  
DRYING BOOTH*



## EMA-Tech wet paint application solutions

- Combined type ( Painting & Drying ) booths
- Dry filtered spray booth ( Positive pressure & open Type )
- Water fall type spray booths ( Positive pressure & open Type )
- Wet scrubber ( venturi ) type positive pressureized spray booths.
- Coagulation & paint sludge removal systems .





*INDUSTRIAL COATING APPLICATIONS*

EMA-Tech is one of the Turkey's leading manufacturers of industrial coating systems and equipment used for application and curing of powder coatings, liquid paint. Also we provide solutions for transfer (conveyor systems) & industrial drying applications.

**“INNOVATIVE TECHNOLOGY,,**



*INDUSTRIAL COATING APPLICATIONS*

Thanks to our experiences & engineering team, we provide solutions that help manufacturers worldwide to increase their productivity, lower material costs and improve finished part quality.

**“ENGINEERING EXPERIENCE,,**



POWDER COATING  
APPLICATIONS LINES



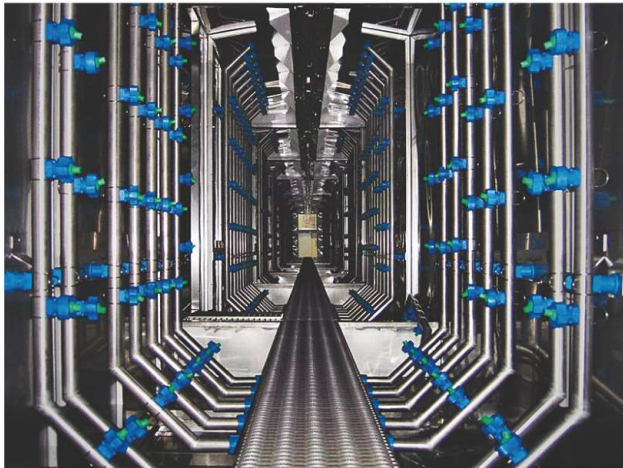
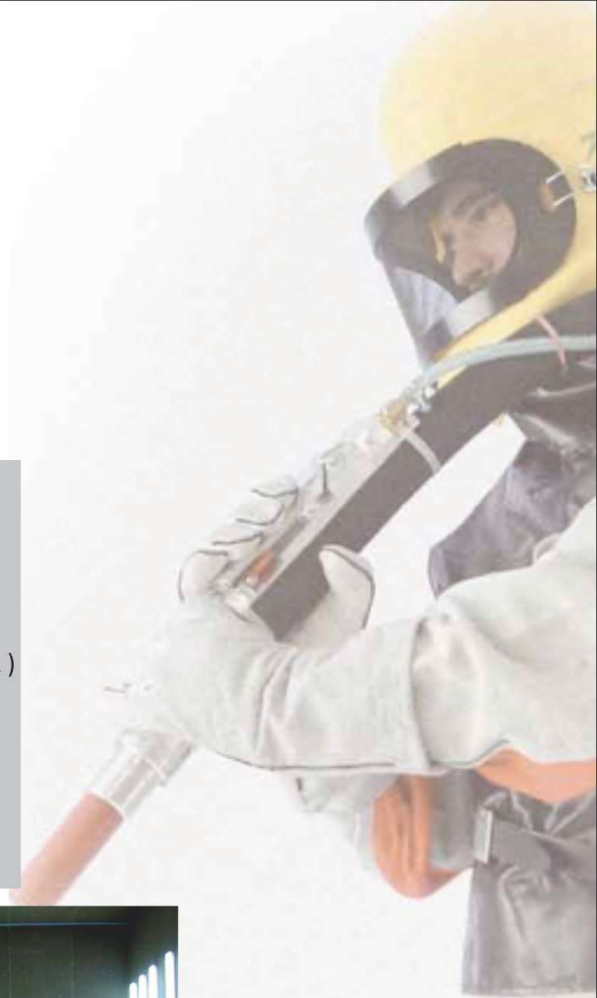
- Conveyorized powder coating lines (Power & Free , Mono rails)
- Bar transfer powder coating systems
- Axial type conveyorized powder coating systems
- PVC powder booths
- Mono cyclone stainless steel powder booth
- Filter type powder booth
- Powder recovery systems.



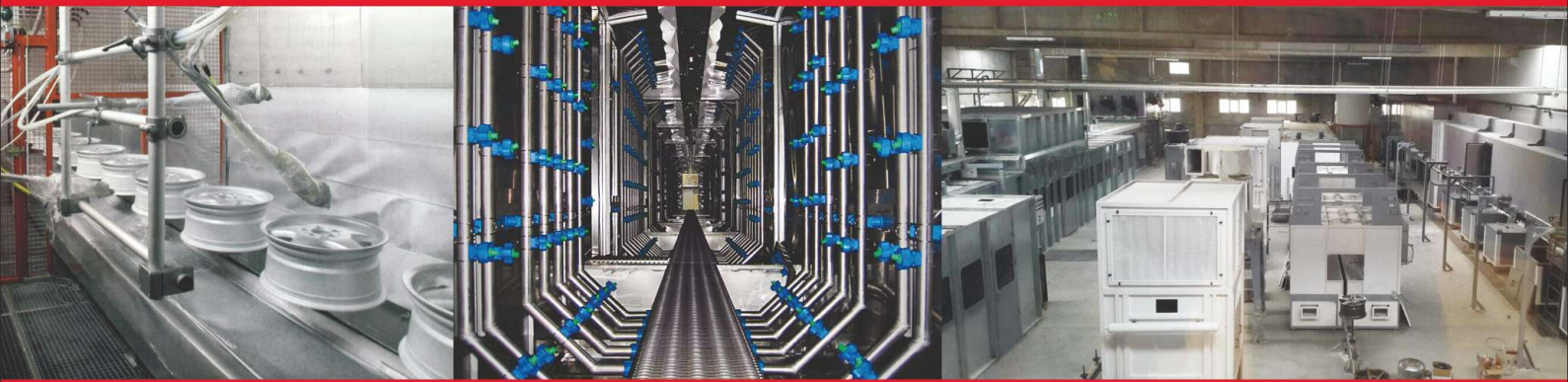


*SURFACE TREATMENT  
LINES*

- Chemical pretreatment spray & dipping lines
- Electro dip painting (KTL)
- Manual washing booths
- Manual blasting booth
- Automatic blasting machines.



- Wet Coating Systems • Wet Painting Booths • Powder Coating Systems • Curing Ovens
- Painting and Drying Booths • Surface Treatment Systems • Powder Coating Booths



72. Sk. No:2/6 Sasalı Sanayi  
Bölgesi 35621 Çiğli-İZMİR/TURKEY  
T e l : +90 (232) 449 85 05  
F a x : +90 (232) 449 85 01  
Gsm : +90 (533) 351 48 42  
info@ema-tech.net